

COLORADO HOMES & LIFESTYLES™

LOCAL ARTISAN CHOCOLATE | MOUNTAIN MODERN STYLE

JANUARY FEBRUARY '13

VOLUME 33, NUMBER 1

BIG NEWS FROM DAM DIRECTOR CHRISTOPH HEINRICH

# COLORADO HOMES & LIFESTYLES™

HOME  
Makeovers  
big & small

AT HOME WITH  
John Fielder



ColoradoHomesMag.com  
JANUARY/FEBRUARY 2013



# European Eclectic

A *très chic* renovation of this Denver home puts a fresh spin on Old-World elegance

By ELISABETH A. SULLIVAN  
PHOTOGRAPHY BY BERNARD ANDRE

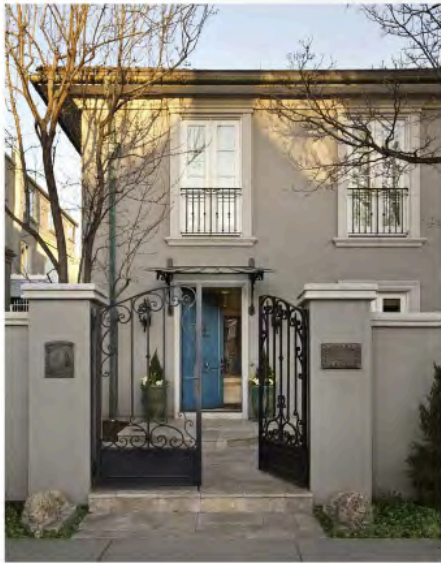
WITH A FEW WELL-CHOSEN furnishings and adornments, home design can transport you to a different place or time. But taking a newer home back several centuries—and doing so authentically—requires more than just some artfully placed antiques.



(left) "Every piece of furniture in the living room came from the Peterschmidts' last house," interior designer Linda Flayd says. "I reupholstered the two chairs; the sofa came from the den; the draperies were in their master bedroom. I had their large and valuable rug professionally cut down." An English console table sits behind the sofa, which was reupholstered in a Clarence House brocade fabric.

“When I walked into this house, I said, ‘I’ve been in apartments in Paris that feel like this, with the sunlight coming in.’”

—Rosanne Peterschmidt



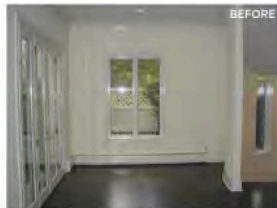
(above) The home’s stucca façade was reskimmed and embellishments were added, including crown molding (under the eaves), window trim and a stunning new iron gate. Floyd painted the front door “a wonderful French blue” and crowned it with an antique French marquis. (opposite) Floyd integrated built-ins and woodwork into the eating nook, and employed an Italian writing desk, circa 1700, as the table. The iron chandelier echoes the iron railing on the adjacent stairwell.

Before homeowners Rosanne and David Peterschmidt got their hands on it, this home in Denver’s Cherry Creek North neighborhood was a typical city dwelling, circa 1990. Now it recalls 18th-century Paris, with flickering lanterns, intricate ironwork, grand custom woodwork and layers of elegant finishes—the result of a gut renovation that spanned 14 months and employed a fleet of local craftsmen. And after all of that hard work, the project’s measure of success is somewhat ironic: it looks as if the homeowners didn’t change a thing.

Pulling off a period renovation is not for amateurs. Do too little and it looks artificial and out of place. Do too much and it looks like a museum. In this case, Rosanne Peterschmidt and her design team, interior designer Linda Floyd and contractor Steve Diamond, had just the right touch—with a sledgehammer.

“To make it look like it’s always been there, you have to ‘peel back’ as far as we peeled back,” Peterschmidt says. “We took out the cabinetry and all of the tile and finishes. We kept the hardwood floors, but otherwise we had the chance to add things that were going to make the home look authentic.”

They reframed walls and added custom built-ins and woodwork at nearly every turn. Floyd designed a thick, ornate wall that runs the length of the house, from the front door to the back family room. This anchoring element allowed the designer to add double-sided china cabinets in the dining room and a stately entrance to the kitchen, which gives the period





design a sense of permanence. And in the foyer, she swapped out the staircase's white spindles for a custom iron railing crafted by local artisan Max Brun, recalling an 18th-century French manor.

The exterior received a facelift, too. Its stucco façade was reskinned and embellishments were added, including crown molding under the eaves, cast-stone casings on the windows and ornamental ironwork. Floyd painted the front door a French blue, fitted it with imported French steel hardware and crowned it with an antique French marquis.

The European embellishments and Old-World ambience give the home a sense of sophistication, but the scheme steers clear of fuddy-duddy formality. "It's fresh enough to live in today, the designer says, "but it has elements from the past." For example, Floyd filled the kitchen with Old-World-inspired touches such as an antique French fireback and a limestone and pewter hood over the stove, but then she opened the space to the family room to suit a modern lifestyle.

(above) "There was no light in the kitchen, so I put windows behind the cabinets on either side of the stove," Floyd says. "The contractor thought I was crazy, but he executed it beautifully!" The white Carrera marble countertops and antique brass shelving were inspired by Parisian bistros. The center island, clad in walnut, features a refrigerated drawer. An antique French fireback embellishes the backsplash behind the La Cornue stove, which is crowned with a limestone surround and a pewter hood. (opposite) The formal dining room, tucked in beyond a weighty archway, reuses the homeowners' existing cabinets and drapes. A rock-crystal chandelier adds rough-hewn elegance.





“We were lucky enough to have a contractor who, when I would say, ‘We want to do this,’ would just pause for a moment and then say, ‘We can do that.’”  
*—Linda Floyd*

(opposite) In the guest bathroom, Floyd installed antique sconces and a mosaic marble floor, and added an antique side table for additional storage. (right) The guest room's serene design scheme features an upholstered headboard, an embroidered silk dust ruffle and an antique French chandelier dripping with milk-glass fruit.



Floyd's eye for detail could have sent some contractors running for the hills, but Steve Diamond of Englewood-based Diamond Homes was up to the challenge. “We’ve done a lot of Old-World-style homes, but this involved detail on a different level,” he says. “But as the final layers were completed and the furniture and fabric were placed, Linda’s vision came together. This home is like a little jewel box from Paris that just got dropped onto an ordinary street in Cherry Creek North.”

Peterschmidt likes that assessment. “That’s what we kept saying when we were building the home. We wanted it to be this little jewel box. This is the fourth house that my husband and I have created with Linda and this is our favorite.” □

**DESIGN DETAILS**  
 Interior Designer  
 LINDA FLOYD, LINDA FLOYD, INC.  
[lindaflloyd.com](http://lindaflloyd.com)

Contractor  
 STEVE DIAMOND, DIAMOND HOMES  
[diamondhomesinc.com](http://diamondhomesinc.com)

Custom Cabinetry and Woodwork  
 ASPEN LEAF KITCHENS  
[alkl.com](http://alkl.com)

{ MORE @ }

[coloradohomesmag.com/Eclectic](http://coloradohomesmag.com/Eclectic)